

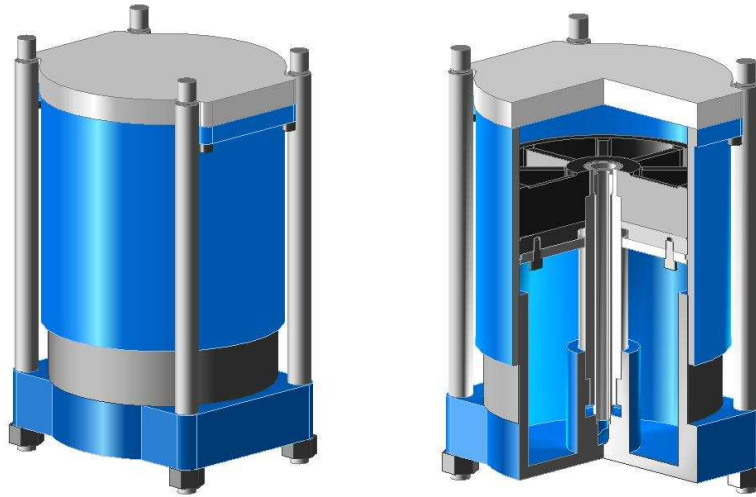


DAYTON DIE CUSHIONS

Model "MC" Pneumatic Die Cushions

The Model "MC" Series incorporates a dual piston design with a very ruggedly built frame to double the ring holding force (RHF) of other models of similar diameter in approximately the same price.

This series of cushions is adaptable to medium size and large presses where a great deal of R.H.F. is required. It is built to withstand long, heavy stamping operations such as compound blanking, forming and drawing at normal shop airline pressure.



**100 PSI. MAX. INPUT PRESSURE
SHOWN IN BOLSTER MOUNTED OPTION**

FEATURES:

- ✓ Operates at normal 100 psi. shop air pressure.
 - ✓ Mounting may be made to bolster plate, to the press frame, or bed superstructure.
 - ✓ Constructed of wrought steel cylinder welded and normalized, cast pistons and solid steel center rod.
 - ✓ Standard pin pads are hardened and ground. Pin pads are available in round, rectangular or square shapes.
 - ✓ Raised pin pads can be made to fit smaller than normal bed openings or to allow for slug removal by adding a hole in the pin pad with slug chute (see page 12).
 - ✓ Lubrication fittings are positioned at the front of the lower flange on standard designs. External centralized greasing systems available at customer option.
 - ✓ The unit features excellent guiding by use of internal cylinder rod and generous cylinder to piston overlap. External guiding mechanism available.
 - ✓ Furnished complete with pin pad, mounting structure, surge tank, regulator, gauge, hoses, fittings and Installation Service Manual.
 - ✓ Each installation is warranted for one year from date of shipment.
-

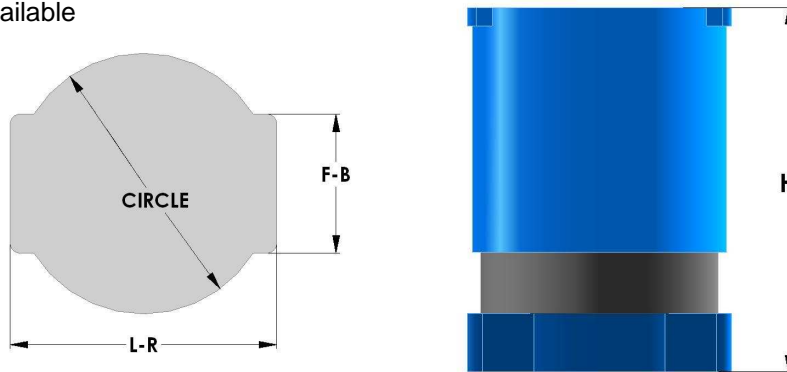


DAYTON DIE CUSHIONS

CUSHION SELECTION CHART

MODEL	TONS@ 100 P.S.I.	STANDARD PIN PADS			HEIGHT STD. DRAW	CUSHION DRAW	
		L-R	F-B	CIR.		STD**	MAX
MC-8	5	10-1/4	7-1/4	9	19-1/8	3	CONSULT FACTORY
MC-10	7.8	12-5/8	8-1/8	11	19-1/2	3	
MC-12	11.4	13-3/4	10-3/16	13-1/8	20	3	
MC-14	15.4	16-1/4	12-1/4	15-1/4	23-3/4	4	
MC-16	20	19	13-1/2	17-1/4	22-3/8	3	
MC-16	20	19	13-1/2	17-1/4	28-3/8	5	
MC-18	25.4	20-1/4	16-1/4	19-1/4	25-5/8	3	
MC-18	25.4	20-1/4	16-1/4	19-1/4	31-5/8	5	
MC-20	31.4	24-3/4	18-3/4	21-1/4	36-3/4	6	
MC-22	38	26-1/4	20-1/4	23-3/8	36-3/4	6	
MC-24	45.2	28-7/8	22-1/8	25-3/8	42-3/4	8	

*Height includes pin pad thickness and maximum adjustment, but NOT mounting structure thickness. Shorter strokes are available



MOUNTING ROD SPECIFICATIONS FOR STANDARD BOLSTER MOUNTED DIE CUSHIONS

Model	L-R	F-B	H	Thread
MC-8	8-19/32	5-19/32	1	7/8 -9
MC-10	10-7/8	6-3/8	1-1/4	1 -8
MC-12	12	8-7/16	1-5/8	1 -8
MC-14	14-1/4	10-1/4	1-5/8	1-1/4 -7
MC-16	16-1/2	11	1-3/4	1-3/8 -6
MC-18	17-3/4	12-3/4	1-7/8	1-1/2 -6
MC-20	21-1/4	15-1/4	2	1-3/4 -5
MC-22	22-3/4	16-3/4	2	1-3/4 -5
MC-24	24-7/8	18-1/8	2-1/4	2 -4-1/2

