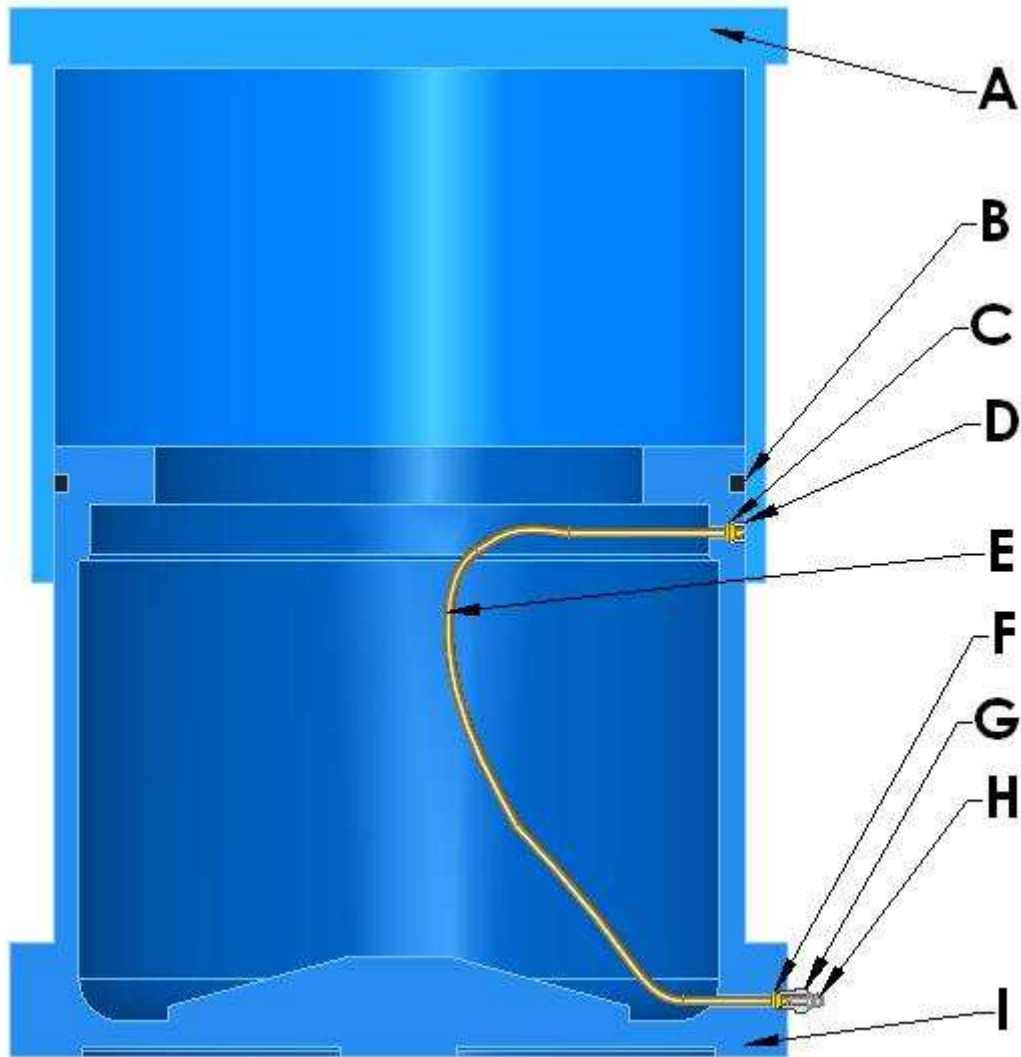


Model C Parts List

IMPORTANT: When ordering repair parts, be sure to indicate cushion model and size, serial number and part number on purchase order to avoid errors.



Model C Parts List

Description		Cushion Diameter and Part Number				
		6"	8"	10"	12"	14"
Cushion Cylinder ^(a)	A	7429	4231	4170	4141	4142
Quad Ring	B	8312	8335	8700	10109	9878
Compression Sleeve	C	867	867	867	867	867
Grease Screw	D	868	868	868	868	868
Copper Tubing	E	629	629	629	629	629
Compression Sleeve	F	867	867	867	867	867
Compression Fitting	G	870	870	870	870	870
Grease Fitting	H	625	625	625	625	625
Cushion Piston ^(a)	I	222	318	306	311	309

Description		Cushion Diameter and Part Number				
		16"	18"	20"	22"	24"
Cushion Cylinder ^(a)	A	4143	5681	5682	4146	5683
Quad Ring	B	10110	10687	10688	15393	15394
Compression Sleeve	C	867	867	867	867	867
Grease Screw	D	868	868	868	868	868
Copper Tubing	E	629	629	629	629	629
Compression Sleeve	F	867	867	867	867	867
Compression Fitting	G	870	870	870	870	870
Grease Fitting	H	625	625	625	625	625
Cushion Piston ^(a)	I	556	649	969	1103	797

(a) When ordering cylinders and cushion pistons, order according to cushion model and serial number (Serial Number is located at the front, lower flange of the cushion unit)

Pneumatic Packings

Dayton Die Cushions Packings are of first quality material, thus assuring long wear and dependability under strenuous conditions. When ordering packings, please give model, size and serial number of cushion as well as part number of the packing.

There has been a **change in the type of packing** used on several models. Serial number higher than the one listed below for particular cushion model use quad packing instead of cup packing. Please refer to the tables below to check what type of packing your cushion uses.

Model C Piston Packings				
	Piston Diameter	Cup Packing Part Number	Quad Ring Part Number	Cushion Serial Number *
C-6	6"	495	8312	19762
C-8	8"	169	8335	19603
C-10	10"	490	8700	19570
C-12	12"	492	10109	19238
C-14	14"	179	9878	19187
C-16	16"	168	10110	19230
C-18	18"	650	10687	19646
C-20	20"	970	10688	19609
C-22	22"	1104	15393	19642
C-24	24"	798	15394	19384

* Quad Ring Packings used after this Serial Number.

Installation Instructions

Cup Packings

PRECAUTION: When installing a cup packing, be careful not to damage or turn back the lip. This can be avoided by making a clamping band as shown in Fig. 15 from 16-gauge band iron, 1/2" to 1/8" wide. The ends of this band iron with two holes pierced to receive an ordinary stove bolt should be bent so that the circumference is a little less from bend to bend than the circumference of the piston of the pneumatic die cushion unit on which it is to be use.

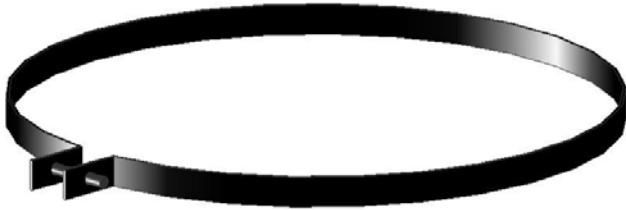


Fig. 15 Clamping band

	Description
A	Cushion Cylinder
B	Cup Packing
C	Clamping Band
D	1/4" Lockwasher (Part No. 438)
E	Cup Packing Ring
F	1/4"-20 x 3/4" Allen Cap Screw (Part No. 441)
G	Cushion Piston

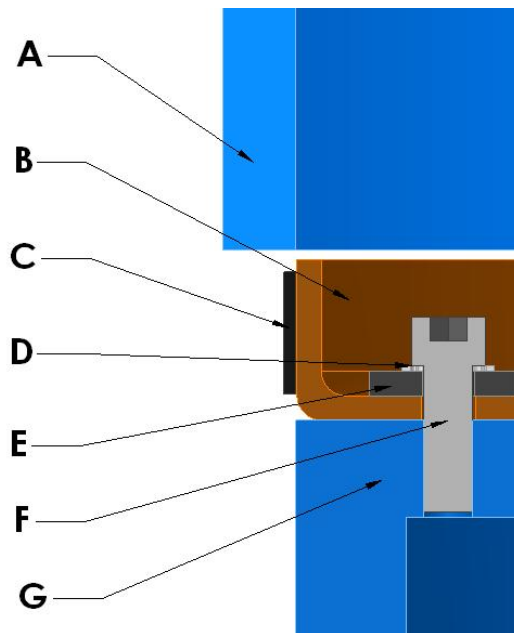


Fig. 16 Cup Packing Installation

Installation Instructions

Quad Packings

When installing quad packings it is advisable to grease the packing and groove thoroughly before cylinder is installed. Cylinder should be eased over packing to prevent shearing or gouging during installation.

CAUTION: It is advisable to check the 3/16" metal greasing tubes while the cushion unit is disassembled, because severe vibration may cause them to fracture at times. The lubrication instructions given on Page 17 will explain the procedure to follow in checking the lubrication system.

	Description
A	Cushion Cylinder
B	Quad Packing
C	Lubrication Tubing
D	Cushion Piston

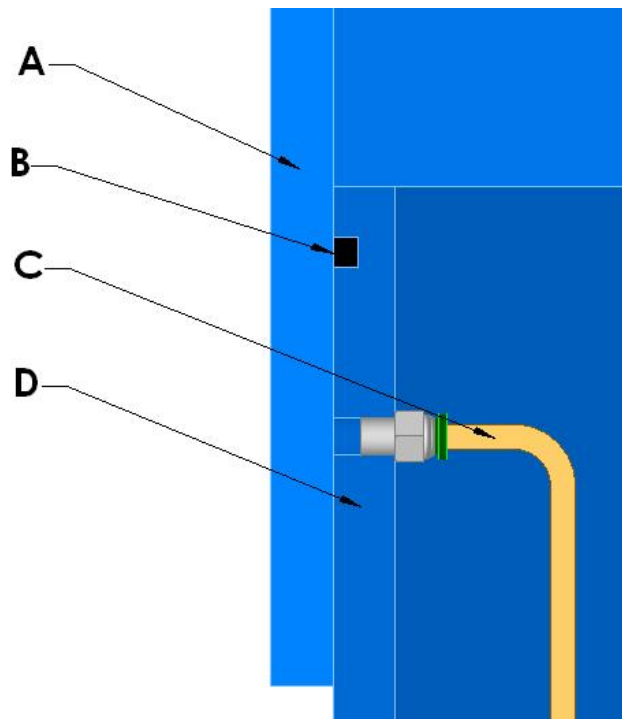


Fig. 17 Quad Ring Installation