

# Model "H-4" Booster Pump

**IMPORTANT:** When ordering repair parts, be sure to indicate pump model and size, serial number and part number on purchase order to avoid errors.

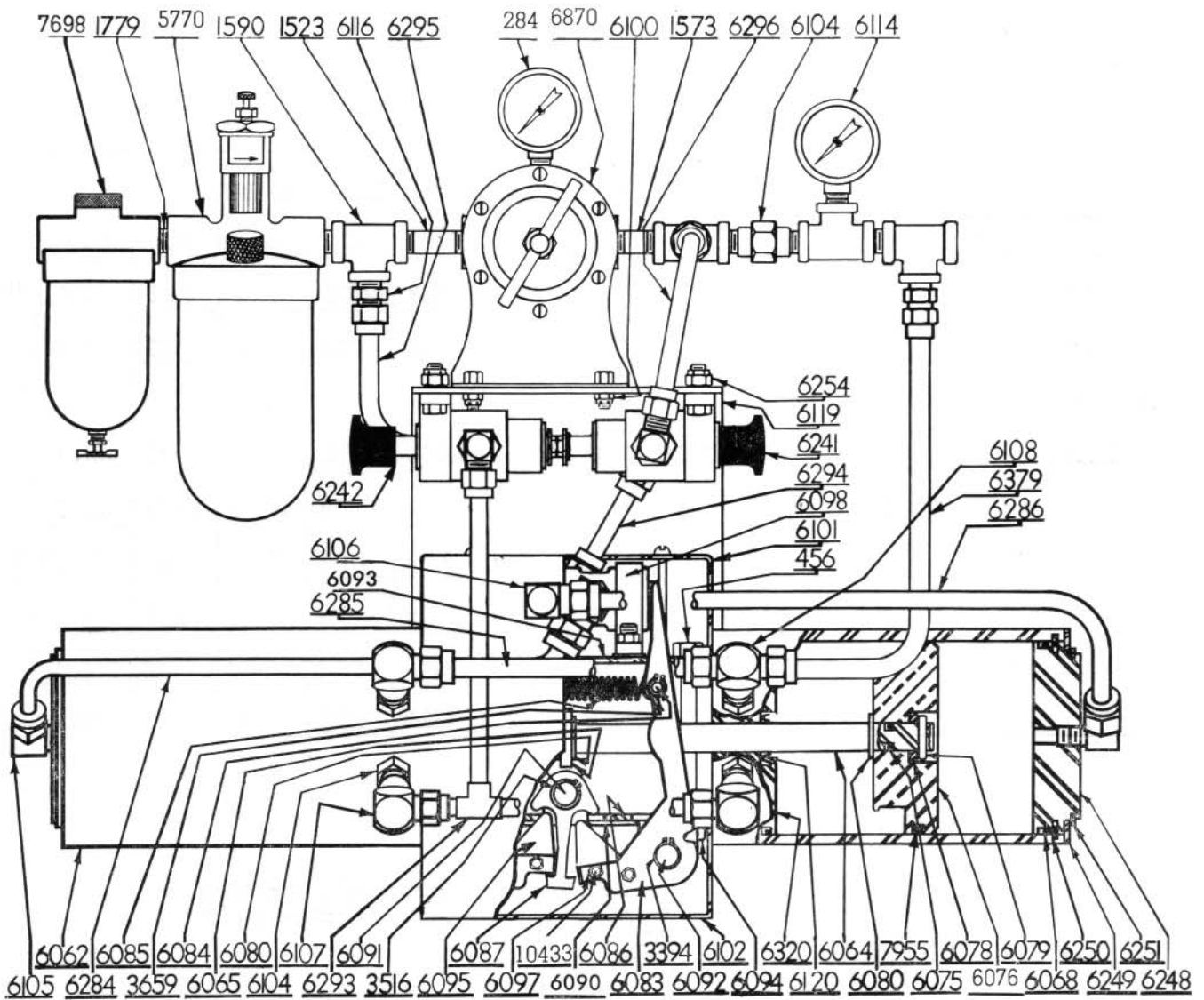


Fig. No. 78

## MODEL "H-4" BOOSTER PUMP PARTS LIST

DESCRIPTION	Part No.	DESCRIPTION	Part No.
Gauge (160) .....	284	Trip Lever Cover .....	6102
Hex. Head Cap Screw .....	456	Check Valve .....	6104
Pipe Nipple .....	1523	Male Elbow .....	6105
Pipe Nipple .....	1573	Extra Long Male Elbow .....	6106
Pipe Tee .....	1590	Female Elbow .....	6107
Pipe Nipple .....	1779	Female Branch Tee .....	6108
Truarc Retainer .....	3394	Air Filter .....	7698
Truarc Retainer .....	3516	Gauge (300) .....	6114
Truarc Retainer .....	3659	Male Connector .....	6116
Main Cylinder Tube .....	6062	Base Mounting Plate .....	6119
Connecting Rod .....	6064	"U" Packing .....	6120
Actuator .....	6065	Valve, 2-way, Knob Operated .....	6241
"O" Ring .....	6068	Valve, 2-way .....	6242
"O" Ring .....	6075	Head .....	6248
Moveable Piston .....	6076	Head Retainer .....	6249
Piston Washer .....	6078	Truarc Retainer .....	6250
Piston Pin .....	6079	Truarc Retainer .....	6251
Truarc "E" Retainer .....	6080	Nut .....	6254
Trip Arm .....	6083	Air Line .....	6284
Spring Pin .....	6084	Tubing .....	6285
Spring .....	6085	Tubing .....	6286
Bottom Mounting Plate .....	6086	Regulator and Bracket Assembly .....	6870
Pawl Assembly .....	6087	Tubing .....	6293
Pawl Pin .....	6091	Tubing .....	6294
Trip Arm Pin .....	6092	Tubing .....	6295
Nut .....	6094	Tubing .....	6296
Trip Arm Insert .....	6095	Bowl Lubricator .....	5770
Round Head Machine Screw .....	10433	Stationary Piston .....	6320
Hex Nut .....	6097	Tubing .....	6379
Valve, 4-way .....	6098	Pivot Plate .....	6090
Nut .....	6100	Top Mounting Plate .....	6093
Valve Cover .....	6101	Quad-Ring Packing .....	7955