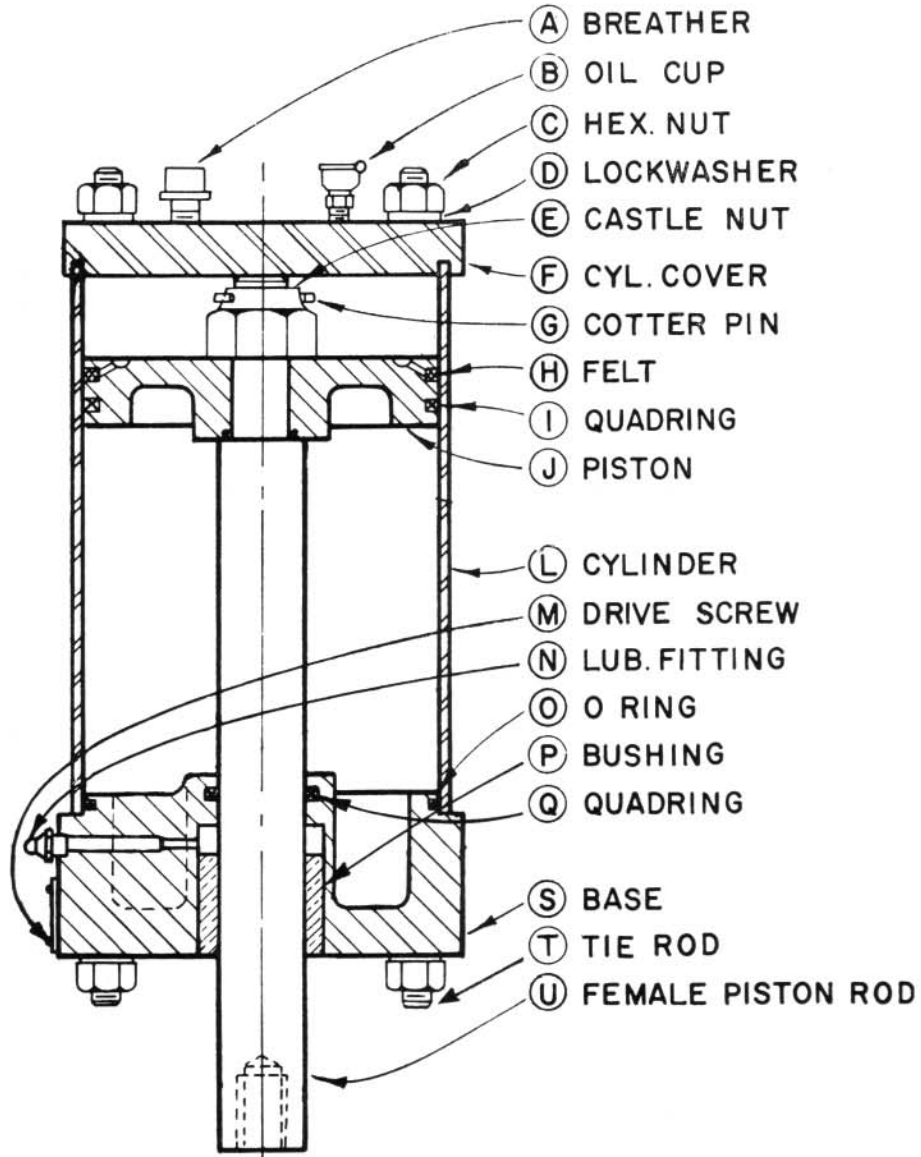


# Counter-balance Cylinder Parts List

**IMPORTANT:** When ordering repair parts, be sure to indicate counter-balance cylinder model and size, serial number and part number on purchase order to avoid errors.



NOTE: For Prior Rod Bushing and packing construction see page 43. This construction used after

Model	S/N
L-5	21121
L-6	22324
L-8	22610
L-10	23210
L-12	22354

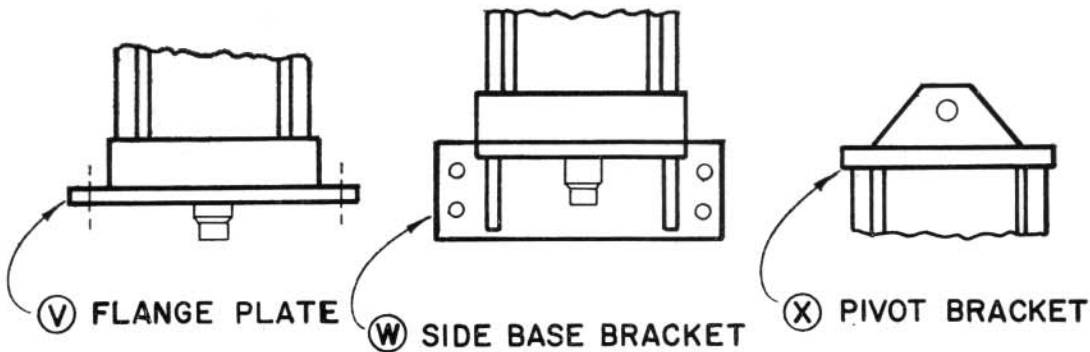


Fig. No. 84

## Model "L" Parts List

DESCRIPTION		CYLINDER SIZE AND PART NO.				
		5"	6"	8"	10"	12"
Breather	A	6258	6258	6977	6977	6977
Oil Cup	B	3645	3645	3645	3645	3645
Hex Nut	C	598	598	664	424	424
Lock Washer	D	474	474	477	481	481
Castle Nut	E	6173	6173	6173	6173	6699
Cylinder Cover	F	6230	6616	6694	6698	6713
Cotter Pin	G	6252	6252	6252	6252	<b>6842</b>
Felt	H	459	459	459	459	459
Quadring	I	....	....	....	8700	10109
Piston	J	3617	3628	3635	6701	6715
Cylinder	L	3614	3625	3632	6705	6718
Drive Screw	M	3729	3729	3729	3729	3729
Lub Fitting	N	210	210	210	210	210
"O" Ring	O	3639	3640	3641	6708	11510
Bushing	P	698	698	698	698	668
Quadring	Q	9324	9324	9324	9324	8311
Base	S	6231	6617	6693	6709	6744
Tie Rod	T	3621	3621	6956	6706	6779
Female Piston Rod	U	3622	3622	6580	6736	6702
Flange Plate	V	6940	6946	6952	....	....
Side Base Bracket	W	6179	6628	6731	6711	6757
Pivot Bracket	X	6180	6615	6695	6710	6756
Felt Clamp	AA	3616	3627	3634	....	....
Cup Packing	BB	646	495	169	....	....
"O" Ring	CC	3642	3643	3644	....	....
Packing Clamp	DD	3615	3626	3633	....	....

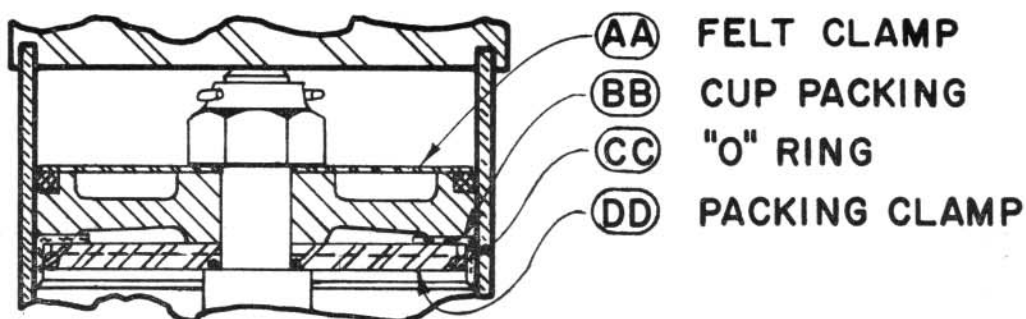


Fig. No. 85

Use Loctite grade CV (blue) at assembly, where packing clamp shoulders on piston rod.)

# Pneumatic Packings

Dayton Rogers Packings are of first quality material, thus assuring long wear and dependability under strenuous operating conditions.

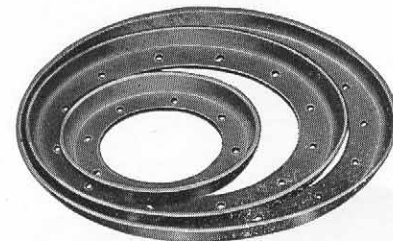
When ordering packings, give Model, Size, and Serial No. of Cushion or Counter-balancing Cylinder as well as Part No. of the packing.

## EQUIPMENT

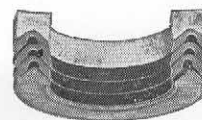
## PISTON PACKINGS

## ROD PACKINGS

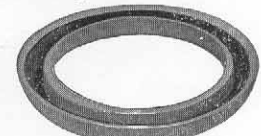
	PISTON DIA.	CUP PACKING	QUAD PACKING	CUSHION S/N*	ROD DIA.	CHEVRON TYPE	QUAD PACKING
D-5	5"	646	10013	19035	1 1/4 Quad 1 1/2 Chev.	702	7954
D-6	6"	495	8312	18985	1 1/4	811	7954
D-8	8"	169	8335	19105	1 1/2	702	9324
D-10	10"	490	8700	19185	1 1/2	702	9324
D-12	12"	492	10109	19532	2	684	8311
D-14	14"	179	9878	20264	2	684	8311
D-16	16"	168	10110	19232	2	684	8311
HD-8	8"	169	8335	22375	2	684	8311
HD-10	10"	490	8700	20000	2	684	8311
HD-12	12"	492	10109		3	6510	9893
HD-14	14"	179	9878	18873	3	6510	9893
HD-16	16"	168	10110	19799	3 Quad 3 1/2 Chev.	7130	9893
L-5	5"	646	.....	19680	1 1/2	6187	9324
L-6	6"	495	.....	19506	1 1/2	6187	9324
L-8	8"	169	.....	19400	1 1/2	6187	9324
L-10	10"	490	8700	19476	1 1/2	6187	9324
L-12	12"	492	10109	21615	2	6746	8311
R-3	3"	5987	9653	18586	1	<b>U-PACKING</b> 6121	9141
R-4	4"	5975	7955	18877	1 1/4	6122	7954
R-5	5"	5985	10013	18747	1 1/2	6123	9324
R-6	6"	495	8312	18798	2	6759	8311
MC, MD, HMC-8	8"	....	8335	All Quad	2 1/2	7882	....
MC, MD, HMC-10	10"	....	8700	All Quad	2 1/2	7882	....
MC, MD, HMC-12	12"	....	10109	All Quad	2 1/2	7882	....
MC, MD, HMC-14	14"	....	9878	All Quad	3 3/4	8973	....
MC, MD, HMC-16	16"	....	10110	All Quad	3 3/4	8973	....
MC, MD, HMC-18	18"	....	10687	All Quad	3 3/4	8973	....
MC, MD, HMC-20	20"	....	10688	All Quad	4 7/8	11737	....
MC, MD, HMC-22	22"	....	10689	All Quad	4 7/8	11737	....
MC, MD, HMC-24	24"	....	10690	All Quad	4 7/8	11737	....
				All Quad	5 7/8	13068	....
C-6	6"	495	8312	19762			
C-8	8"	169	8335	19603			
C-10	10"	490	8700	19570			
C-12	12"	492	10109	19238			
C-14	14"	179	9878	19187			
C-16	16"	168	10110	19230			
C-18	18"	650	10687	19646			
C-20	20"	970	10688	19609			
C-22	22"	1104	10689	19642			
C-24	24"	798	10690	19384			
HC-8	8"	169	8335	24997			
HC-10	10"	490	8700	19626			
HC-12	12"	492	10109	20115			
HC-14	14"	179	9878	19343			
HC-16	16"	168	10110	19253			
HC-18	18"	650	10687	20056			
HC-20	20"	970	10688	20009			
HC-22	22"	1104	10689	19639			
HC-24	24"	798	10690	19743			
HC-30	30"	8650	10761	19974			
HC-40	40"	....	10699	19600			
HC-48	48"	....	10698	19560			



Cup Packing



Chevron Type Packing



U Packing



Quad-Ring Packing

Fig. No. 67

\*Quad Ring Packings used after this S/N.

## INSTALLATION INSTRUCTIONS

### CUP PACKINGS

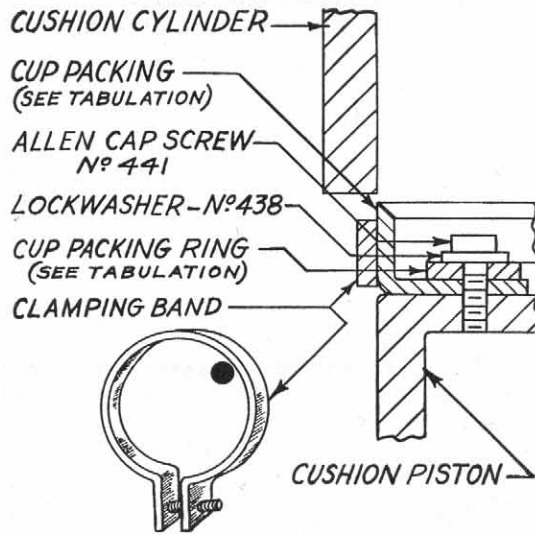


Fig. No. 68

**PRECAUTION:** When installing a cup packing, be careful not to damage or turn back the lip. This can be avoided by making a clamping band as shown in Fig. No. 69 from 16-gauge band iron, 1/2" to 5/8" wide. The ends of this band iron with two holes pierced to receive an ordinary stove bolt should be bent so that the circumference is a little less from bend to bend than the circumference of the piston of the pneumatic die cushion unit on which it is to be used.

### QUAD PACKINGS

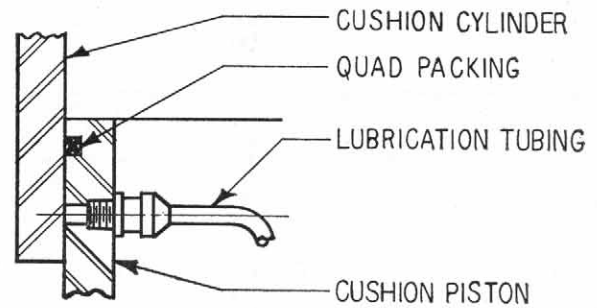


Fig. No. 69

When installing quad packings it is advisable to grease the packing and groove thoroughly before cylinder is installed. Cylinder should be eased over packing to prevent shearing or gouging during installation.

**CAUTION:** It is advisable to check the 3/16" metal greasing tubes while the cushion unit is disassembled, because severe vibration may cause them to fracture at times. The lubrication instructions given on Page No. 40 will explain the procedure to follow in checking the lubrication system.

### MODEL "L" COUNTER-BALANCE PISTON RODS

#### CHEVRON TYPE PACKING

Rod packings can be replaced by removing screws "Z". Spring "P" should then push packing set out. Extend rod if packings stick within the base. Packings come in sets of three.

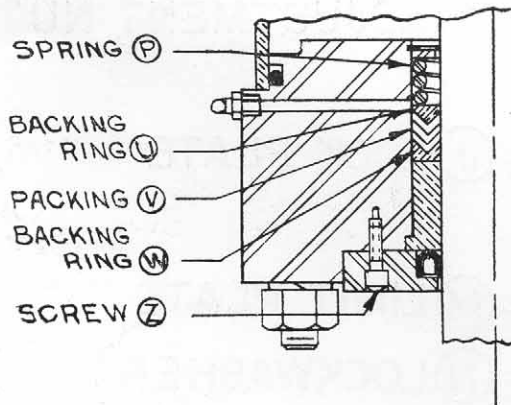


Fig. No. 70

#### QUAD PACKING

To replace Quad packing remove base "S" from cylinder. Packing "Q" can then be removed. Grease groove and packing before reinstalling base.

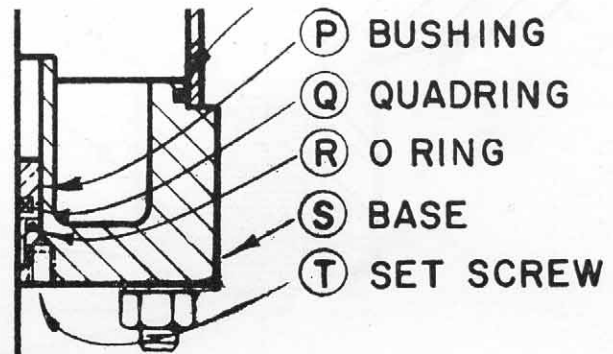


Fig. No. 71

**NOTE:** The designs shown in Fig. 70 and 71 are not current production. See Fig. 82, page 68 for current design. Parts for above models can be serviced, however, by ordering by Counter Balance Model and Serial No. Also state part name and figure No. as shown above.