

## Model "R" Parts List

**IMPORTANT:** When ordering repair parts, be sure to indicate cushion model and size, serial number and part number on purchase order to avoid errors.

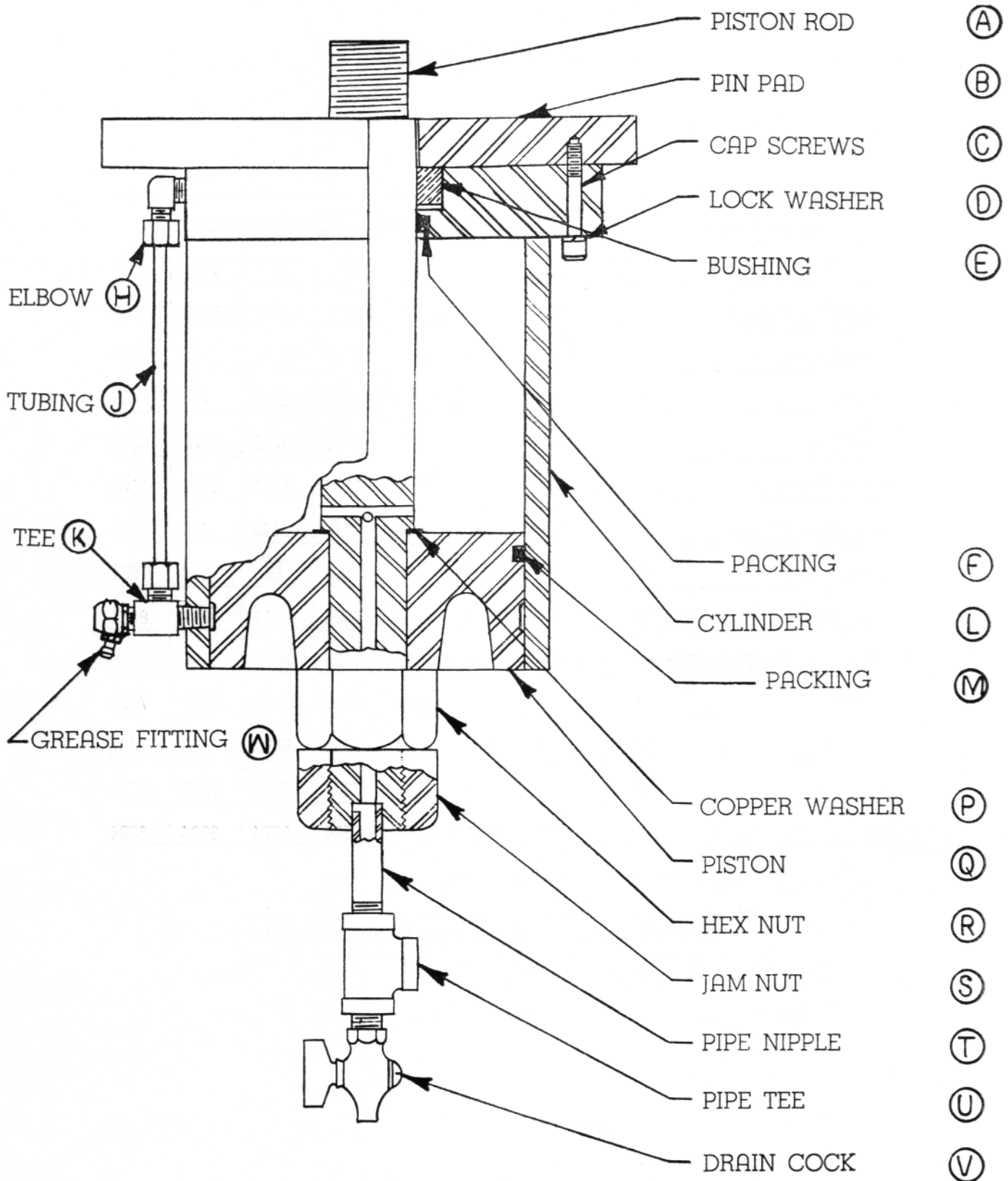


Fig. No. 73

## MODEL "R" PARTS LIST

DESCRIPTION		PART NUMBER			
		R-3-3	R-4-4	R-5-4	R-6-4
Cushion Model No.					
Piston Rod	A	7184	7238	7239	7384
Pin Pad	B	5955	5971	5982	7394
Cap Screws	C	7340	1453	1290	639
Lock Washer	D	1930	457	457	474
Bushing	E	10427	10428	11245	10330
Quad-Ring Packing	F	9141	7954	9324	8311
Elbow	H	7974	7974	7974	7974
Tubing	J	629	629	629	629
Tee	K	7975	7975	7975	7975
Cylinder	L	7457	7462	7463	7892
Quad-Ring Packing	M	9653	7955	10013	8312
Copper Washer	P	247	144	5983	7185*
Piston	Q	9650	7952	9651	8310
Hex Nut	R	424	324	485	818
Jam Nut	S	487	484	485	818
Pipe Nipple	T	2666	3053	1591	575
Pipe Tee	U	1590	10168	589	589
Drain Cock	V	443	443	443	443
Grease Fitting	W	444	444	444	444

\*O-Ring.

# Pneumatic Packings

Dayton Rogers Packings are of first quality material, thus assuring long wear and dependability under strenuous operating conditions.

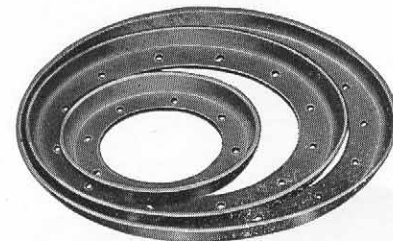
When ordering packings, give Model, Size, and Serial No. of Cushion or Counter-balancing Cylinder as well as Part No. of the packing.

## EQUIPMENT

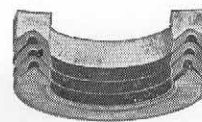
## PISTON PACKINGS

## ROD PACKINGS

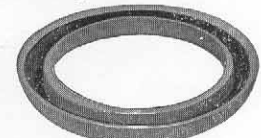
	PISTON DIA.	CUP PACKING	QUAD PACKING	CUSHION S/N*	ROD DIA.	CHEVRON TYPE	QUAD PACKING
D-5	5"	646	10013	19035	1 1/4 Quad 1 1/2 Chev.	702	7954
D-6	6"	495	8312	18985	1 1/4	811	7954
D-8	8"	169	8335	19105	1 1/2	702	9324
D-10	10"	490	8700	19185	1 1/2	702	9324
D-12	12"	492	10109	19532	2	684	8311
D-14	14"	179	9878	20264	2	684	8311
D-16	16"	168	10110	19232	2	684	8311
HD-8	8"	169	8335	22375	2	684	8311
HD-10	10"	490	8700	20000	2	684	8311
HD-12	12"	492	10109		3	6510	9893
HD-14	14"	179	9878	18873	3	6510	9893
HD-16	16"	168	10110	19799	3 Quad 3 1/2 Chev.	7130	9893
L-5	5"	646	.....	19680	1 1/2	6187	9324
L-6	6"	495	.....	19506	1 1/2	6187	9324
L-8	8"	169	.....	19400	1 1/2	6187	9324
L-10	10"	490	8700	19476	1 1/2	6187	9324
L-12	12"	492	10109	21615	2	6746	8311
R-3	3"	5987	9653	18586	1	<b>U-PACKING</b> 6121	9141
R-4	4"	5975	7955	18877	1 1/4	6122	7954
R-5	5"	5985	10013	18747	1 1/2	6123	9324
R-6	6"	495	8312	18798	2	6759	8311
MC, MD, HMC-8	8"	....	8335	All Quad	2 1/2	7882	....
MC, MD, HMC-10	10"	....	8700	All Quad	2 1/2	7882	....
MC, MD, HMC-12	12"	....	10109	All Quad	2 1/2	7882	....
MC, MD, HMC-14	14"	....	9878	All Quad	3 3/4	8973	....
MC, MD, HMC-16	16"	....	10110	All Quad	3 3/4	8973	....
MC, MD, HMC-18	18"	....	10687	All Quad	3 3/4	8973	....
MC, MD, HMC-20	20"	....	10688	All Quad	4 7/8	11737	....
MC, MD, HMC-22	22"	....	10689	All Quad	4 7/8	11737	....
MC, MD, HMC-24	24"	....	10690	All Quad	4 7/8	11737	....
				All Quad	5 7/8	13068	....
C-6	6"	495	8312	19762			
C-8	8"	169	8335	19603			
C-10	10"	490	8700	19570			
C-12	12"	492	10109	19238			
C-14	14"	179	9878	19187			
C-16	16"	168	10110	19230			
C-18	18"	650	10687	19646			
C-20	20"	970	10688	19609			
C-22	22"	1104	10689	19642			
C-24	24"	798	10690	19384			
HC-8	8"	169	8335	24997			
HC-10	10"	490	8700	19626			
HC-12	12"	492	10109	20115			
HC-14	14"	179	9878	19343			
HC-16	16"	168	10110	19253			
HC-18	18"	650	10687	20056			
HC-20	20"	970	10688	20009			
HC-22	22"	1104	10689	19639			
HC-24	24"	798	10690	19743			
HC-30	30"	8650	10761	19974			
HC-40	40"	....	10699	19600			
HC-48	48"	....	10698	19560			



Cup Packing



Chevron Type Packing



U Packing



Quad-Ring Packing

Fig. No. 67

\*Quad Ring Packings used after this S/N.

## INSTALLATION INSTRUCTIONS

### CUP PACKINGS

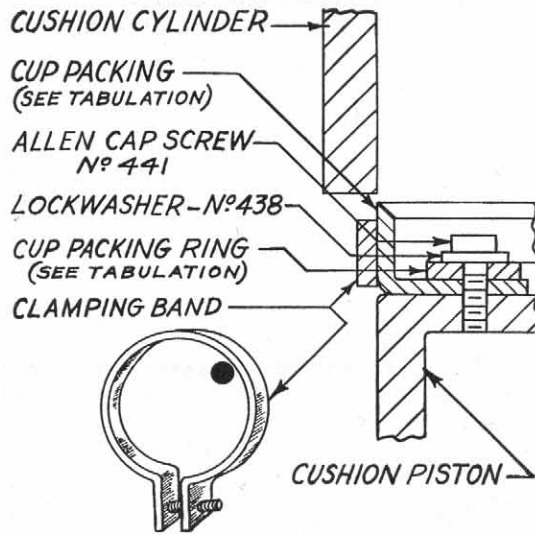


Fig. No. 68

**PRECAUTION:** When installing a cup packing, be careful not to damage or turn back the lip. This can be avoided by making a clamping band as shown in Fig. No. 69 from 16-gauge band iron, 1/2" to 5/8" wide. The ends of this band iron with two holes pierced to receive an ordinary stove bolt should be bent so that the circumference is a little less from bend to bend than the circumference of the piston of the pneumatic die cushion unit on which it is to be used.

### QUAD PACKINGS

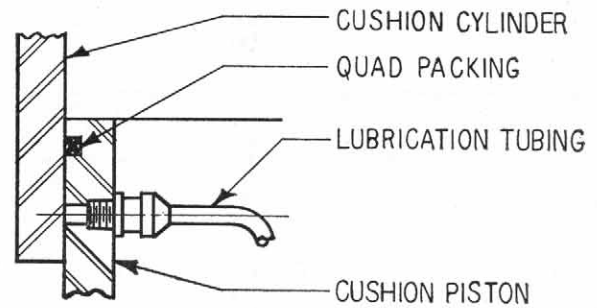


Fig. No. 69

When installing quad packings it is advisable to grease the packing and groove thoroughly before cylinder is installed. Cylinder should be eased over packing to prevent shearing or gouging during installation.

**CAUTION:** It is advisable to check the 3/16" metal greasing tubes while the cushion unit is disassembled, because severe vibration may cause them to fracture at times. The lubrication instructions given on Page No. 40 will explain the procedure to follow in checking the lubrication system.

### MODEL "L" COUNTER-BALANCE PISTON RODS

#### CHEVRON TYPE PACKING

Rod packings can be replaced by removing screws "Z". Spring "P" should then push packing set out. Extend rod if packings stick within the base. Packings come in sets of three.

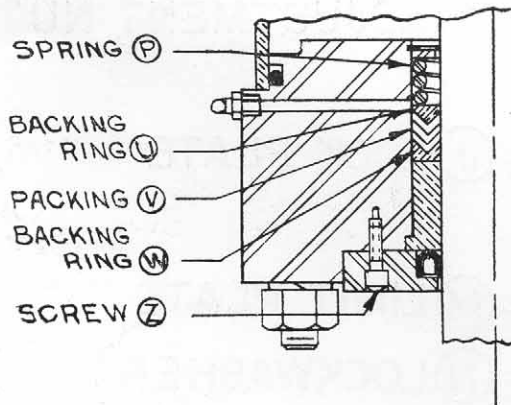


Fig. No. 70

#### QUAD PACKING

To replace Quad packing remove base "S" from cylinder. Packing "Q" can then be removed. Grease groove and packing before reinstalling base.

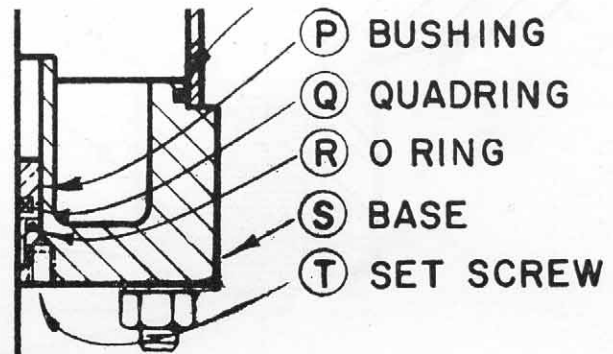


Fig. No. 71

**NOTE:** The designs shown in Fig. 70 and 71 are not current production. See Fig. 82, page 68 for current design. Parts for above models can be serviced, however, by ordering by Counter Balance Model and Serial No. Also state part name and figure No. as shown above.